

MEDICARE ELIGIBLE MRI SERVICES FOR PATIENTS 16 YEARS OR OVER

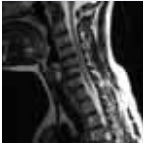
Limited to 3 per year. Frequency restrictions are rolling, not based on calendar or financial year.



HEAD (63551)

Clinical Indications;

- a. unexplained seizure(s);
- b. unexplained chronic headache with suspected intracranial pathology.



C-SPINE (63554)

Clinical Indications;

- a. cervical radiculopathy.



C-SPINE (63557)

Clinical Indications;

- a. suspected cervical spinal trauma.



KNEE (63560)

For patients < 50years. Clinical Indications;

- a. inability to extend the knee suggesting the possibility of acute meniscal tear; **OR**
- b. clinical findings suggesting acute anterior cruciate ligament tear.

Examinations outside of the Medicare eligible criteria can still be performed, but will be charged a small private fee.

All Medicare eligible services **BULK BILLED** (excluding core biopsy)



InFocus
RADIOLOGY



MRI PROCEDURES QUICK REFERENCE GUIDE FOR GP'S

WARNERS BAY
4915 7477

BELMONT
4911 9100

CESSNOCK
4013 5111

www.infocusradiology.com.au

Helping you **support** your patients.

MEDICARE ELIGIBLE MRI SERVICES FOR PATIENTS UNDER 16 YEARS

Limited to 3 per year. Frequency restrictions are rolling, not based on calendar or financial year.



HEAD (63507)

Clinical Indications;

- an unexplained seizure; **OR**
- an unexplained headache if significant pathology is suspected; **OR**
- paranasal sinus pathology that has not responded to conservative therapy.



KNEE (63513)

Clinical Indications;

- internal joint derangement.



ELBOW (63519)

(Prior radiographic examination required)

Clinical Indications;

- a significant fracture; **OR**
- avulsion injury is suspected.



WRIST (63522)

(Prior radiographic examination required)

Clinical Indications;

- suspected scaphoid fracture.



HIP (63516)

(Prior radiographic examination required)

Clinical Indications;

- septic arthritis;
- slipped capital femoral epiphysis;
- Perthes disease.



SPINE (63510)

(Prior radiographic examination required)

Clinical Indications;

- significant trauma; **OR**
- unexplained neck or back pain with associated neurological signs; **OR**
- unexplained back pain if significant pathology is suspected.

OUR SERVICES

	Warners Bay	Belmont	Cessnock
MRI			●
X-ray	●	●	●
Ultrasound	●	●	●
CT (Including Angiogram)	●	●	●
CT Colonography			●
CT Calcium Score		●	
Bone Density		●	●
OPG/Dental	●	●	●
Guided US Injections	●	●	●
Guided CT Injections	●	●	●
Biopsies	●	●	●